



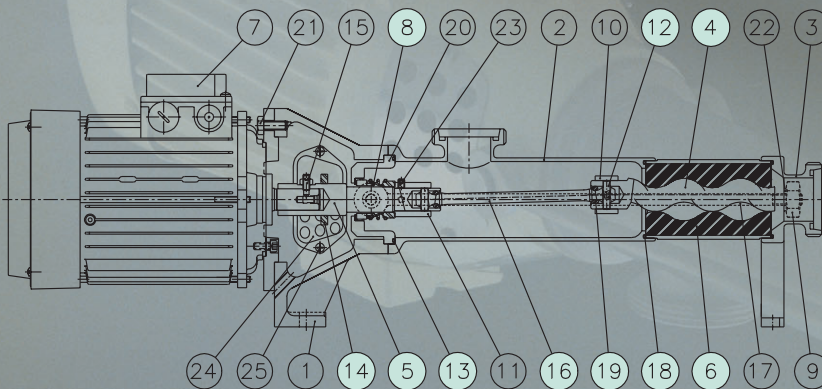
Bomba volumétrica monobloc de rotor helicoidal
Monobloc positive displacement spiral impeller pump

ROTOR-M



Motor
Motor

Motor-variador
Variator-motor



NOMENCLATURA

- | | | |
|-------------|---------------------|----------------------|
| 1 - Brida | 8 - Cierre mecánico | 15 - Prisionero |
| 2 - Cuerpo | 9 - Tuerca | 16 - Barra universal |
| 3 - Boca | 10 - Casquillo | 17 - Tirante |
| 4 - Rotor | 11 - Casquillo | 18 - Junta tórica |
| 5 - Eje | 12 - Pasador | 19 - Junta barra |
| 6 - Estator | 13 - Junta tórica | 20 - Caja cierre |
| 7 - Motor | 14 - Paragotas | 21 - Tornillo |

NOMENCLATURE

- | | | | |
|------------|------------------------|--------------------|----------------|
| 1 - Flange | 8 - Mechanical seal | 15 - Setscrew | 22 - Washer |
| 2 - Body | 9 - Nut | 16 - Universal rod | 23 - Setscrew |
| 3 - Mouth | 10 - Sleeve | 17 - Rod | 24 - Protector |
| 4 - Rotor | 11 - Sleeve | 18 - O-ring | 25 - Screw |
| 5 - Shaft | 12 - Pin | 19 - Rod seal | |
| 6 - Stator | 13 - O-ring | 20 - Seal box | |
| 7 - Motor | 14 - Splash protection | 21 - Screw | |

NOTA: Las piezas de recambio recomendadas están coloreadas. / NOTE: The recommended spare parts are coloured in.

CARACTERÍSTICAS TÉCNICAS

Caudal..... Q = 0.5 a 20 m³/h
 Altura manométrica..... H = 5 a 60 mca
 Motores..... P = 0.5 a 7.5 hp
 (0.37 a 5.5 kW)
 Velocidad motor..... n = 100 a 1500 rpm
 Viscosidad máxima..... V = 100000 cP
 Temperatura..... T = 80°C
 (especial 110°C)
 Material..... AISI-316L

DESCRIPCIÓN

La bomba ROTOR-M es una bomba volumétrica de desplazamiento positivo para líquidos claros y viscosos. Sus características principales son:
 -Autoaspirante volumétrica.
 -Bombeo constante, uniforme, sin pulsaciones.
 -Caudal proporcional a la velocidad.
 -Reversible, invirtiendo el sentido de giro.
 -Desmontaje fácil, por dos tirantes articulados.
 -Filtrado ideal de líquidos delicados.

La bomba ROTOR-M es del tipo monobloc sanitaria de rotor helicoidal y estator de caucho sintético

-Estator normal: Perbunán alimenticio, blanco.
 -Estator especial: Hypalón, EPDM, vitón.
 -Cuerpo y Boca sanitarios, pulido mate.
 -Barra universal de fácil mantenimiento.
 -Eje intercambiable, independiente del motor.
 -Cierre mecánico simple interior Burgmann. Posible otros cierres.
 -Brida en fundición H° F°.
 -Protector seguridad brida CE inoxidable.

Puede ir acoplada directamente a:
 -Motor eléctrico 750-1000-1500 rpm.
 -Motor-reductor 100 a 600 rpm.
 -Motor-variador mecánico 190/1000rpm o 125/600rpm.
 -Variador electrónico o convertidor frecuencia.

Equipada con roscas DIN-11851 (posible SMS, FIL, CLAMP).

APLICACIONES

Nata, crema, jarabes, mermeladas, melazas, cosméticos, pastas, etc.
 Agua, vino, aceites, zumos, etc.

TECHNICAL SPECIFICATIONS

Flow rate..... Q = 0.5 to 20 m³/h
 Total head..... H = 5 to 60 mwc
 Motors..... P = 0.5 to 7.5 hp
 (0.37 to 5.5 kW)
 Motor velocity..... n = 100 to 1500 rpm
 Maximum viscosity..... V = 100000 cP
 Temperature..... T = 80°C
 (special 110°C)
 Material..... AISI-316L

DESCRIPTION

The ROTOR-M is a monobloc positive displacement pump for thin and viscous liquids. Its main specifications are:
 -Positive displacement self-suction.
 -Constant uniform pumping, without any pulsation.
 -Flow rate is proportional to speed of rotation.
 -Reversible by changing the direction of rotation.
 -Easy to disassemble by means of two swivelling tierods.
 -Ideal filtering of delicate liquids.

The ROTOR-M is a monobloc, sanitary,

spiral impeller pump with a synthetic rubber stator.
 -Normal stator: Foodstuff perbunan, white.
 -Special stator: Hypalon, EPDM, viton.
 -Sanitary body and mouth, mat finish.
 -Easy-to-maintain universal rod.
 -Replaceable shaft, independent of the motor.
 -Single internal mechanical seal, Burgmann type. Other seals possible.
 -Cast iron flange.
 -Stainless steel CE flange safety protector.

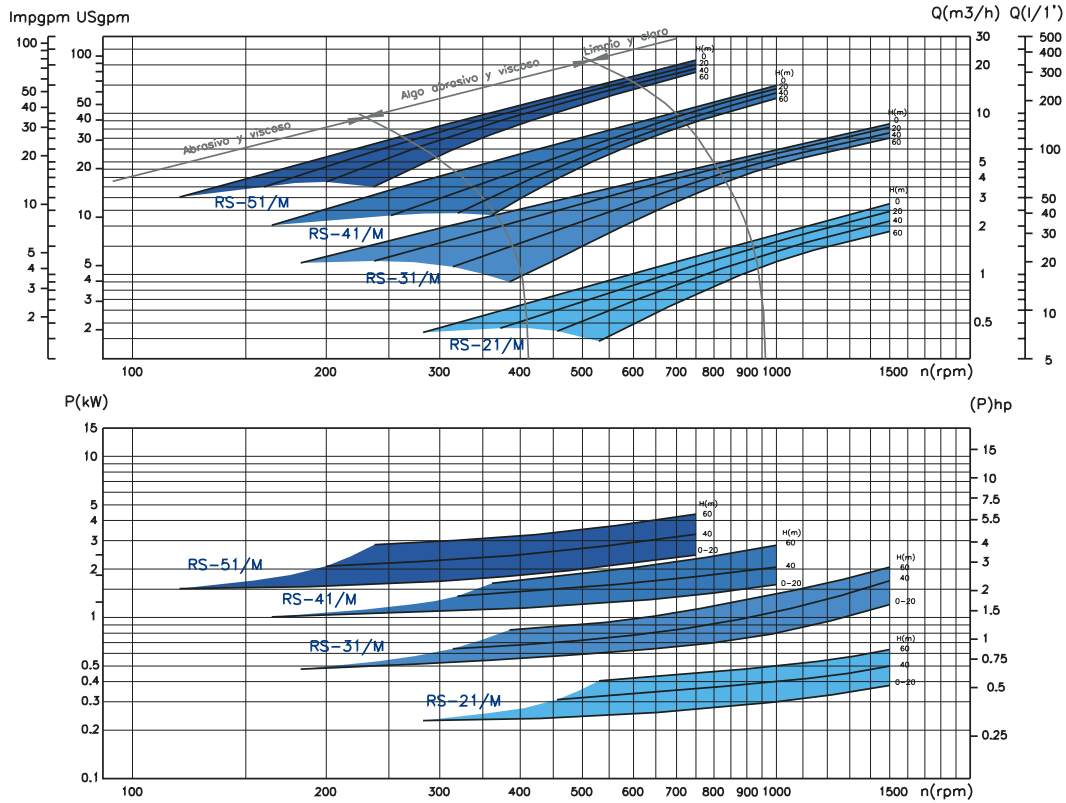
It may be directly coupled to:
 -Electric motor, 750-1000-1500 rpm.
 -Geared motor, 100 to 600 rpm.
 -Mechanical variator-motor, 190/1000 rpm or 125/600 rpm.
 -Electronic variator or frequency converter.

Fitted with DIN-11851 threads (possible SMS, FIL, CLAMP).

APPLICATIONS

Cream, custard, syrups, jams, molasses, cosmetics and pastes etc.
 Water, wine, oil and juices etc.

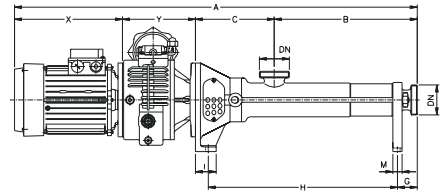
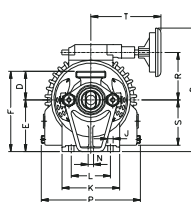
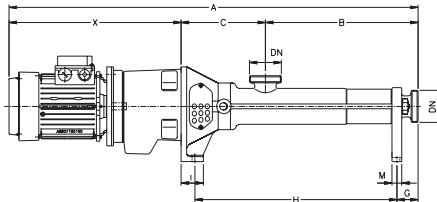
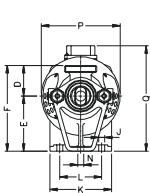
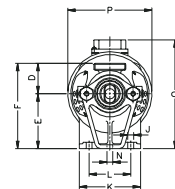
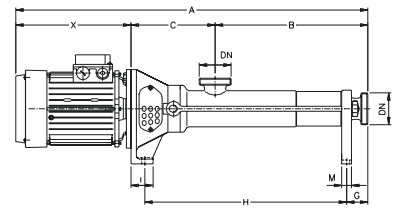
■ CURVAS CARACTERÍSTICAS / CHARACTERISTIC CURVES



NOTA: Estas curvas se entienden para líquido no viscoso de densidad 1 cST. / NOTE: The curves are understood to be for non-viscous liquids with a density of 1 cST.

■ DIMENSIONES / DIMENSIONS

TIPO / TYPE	DIMENSIONES / DIMENSIONS (mm)													MOTOR / MOTOR					PESO / WEIGHT (kg)				
	B	C	D	E	F	G	H	I	J	K	L	M	N	DN	TAM/SIZ	hp	kW	rpm		X	A	P	Q
RS-21/M	310	171	62	112	174	43	410	45	12	125	85	20	12	NW-40	80	0.75-1	0.55-0.75	1500	234	715	160	222	19-20
															90	1.5-2	1.1-1.5	270	751	174	235	23-26	
															80	0.5-0.75	0.37-0.55	1000	234	715	160	222	19.5-20.5
															90	1-1.5	0.75-1.1	270	751	174	235	23-26	
															90	0.5-0.75	0.37-0.55	750	270	751	174	235	23-26
RS-31/M	419	205	68	132	200	50	539	55	12	150	110	30	12	NW-50	90	1.5-2	1.1-1.5	1500	270	894	200	255	28-31
															100	3-4	2.2-3	299	923	200	269	36-39	
															90	1-1.5	0.75-1.1	750	270	894	200	255	28-31
															100	2	1.5	1000	299	923	200	269	38
															112	3	2.2	301	925	221	278	42	
RS-41/M	525	265	75	160	235	55	698	65	14	200	150	30	14	NW-65	90	0.5-0.75	0.37-0.55	750	270	894	200	255	28-31
															100	1-1.5	0.75-1.1	750	299	923	200	269	35-38
															112	2	1.5	301	925	221	278	43	
															112	3	2.2	301	1091	250	306	57	
															132	4-5.5	3-4	1000	367	1157	261	325	69-76
RS-51/M	625	302	85	180	265	70	810	80	15	240	180	40	16	NW-80	132	3-4	2.2-3	750	367	1294	300	343	101-108
															160	5.5-7.5	4-5.5	493	1420	310	389	130-143	



TIPO / TYPE	MOTOR-REDUCTOR / GEARED MOTOR							PESO / WEIGHT (kg)
	hp	kW	rpm	X	A	P	Q	
RS-21/M	0.5	0.37	100-125-150-200-250	350	831	160	214	25
	0.75	0.55	100-125-150-200-250-300-375-500	420	901	200	222	27
	1	0.75	125-150-200-250-300-375-500-625					28.5
RS-31/M	1.5	1.1	100-125-150-200-250-300-375	462	1086	200	255	43
	2	1.5	125-150-200-250-300-375-500-625	515	1139	250	269	49.5
	3	2.2	200-250-300-375-500-625	480	1270	250	285	67.5
RS-41/M	2	1.5	100-125-150-200-250-300-375-500-625	551	1341	250	297	71.5
	3	2.2	125-150-200-250-300-375-500-625	560	1487	300	330	109
	4	3	150-200-250-300-375-500-625	563	1490			115
RS-51/M	3.2	2.2	100-125-150-200-250-300-375	698	1625	300	343	131
	5.5	4	125-150-200-250-300-375-500-625					

TIPO / TYPE	MOTOR-VARIADOR / VARIATOR-MOTOR										PESO / WEIGHT (kg)	
	hp	kW	rpm	X	Y	A	P	Q	R	S		T
RS-21/M	1	0.75	165-950	234	158	873	215	268	103	98	152	43
	1.5	1.1		270	189	940	253	298	123	122		60.5
	1.5	1.1										65.5
RS-31/M	2	1.5	165-950	270	189	1083	253	306	123	122	152	68
	3	2.2	175-1000	299	220	1143	305	346	149	145		96.5
	2	1.5	165-950	270	189	1249	253	336	123	122		83
RS-41/M	3	2.2	175-1000	299	220	1309	305	362	149	145	152	111.5
	4	3										118
	4	3	175-1000	299	220	1446	305	382	149	145	152	143
RS-51/M	5.5	4	175-1000	301	220	1446	305	382	149	145	152	150
	7.5	5.5	200-1000	367	244	1538	379	450	190	176	195	215



Bominox, S.A.
Ctra. Banyoles, km.14
17844 Cornellà de Terri (Girona) Spain
Apart.123 Banyoles

Tel. 34 972 59 50 20
Fax 34 972 59 51 20
E-mail: info@bominox.com
www.bominox.com